

Socialization of Compost Making from Rice Straw at The Nagari Sijunjung Indigenous Village, West Sumatera

Danil Eka Fahrudin^{1*}, Muh Arfah², Eldo Delamontano³, Muhammad Hafidz⁴, Zahra Firjatullah⁵, Hikkal Ahmad Bayu⁶, Wanda Julianti Fitri⁷, Salma Istifaiyyah⁸, Afif Akbar⁹, Asriani Muflihah¹⁰, Candra Irawan Peto Molieh¹¹, Ridwan¹²

¹Bioinformatics Research Center, Malang, Indonesia

²Barakarsa Foundation, Yogyakarta, Indonesia

^{3,4}Universitas Padjadjaran, Sumedang, Indonesia

⁵Universitas Sumatera Utara, Medan, Indonesia

⁶UIN Alauddin Makassar, Makassar, Indonesia

⁷Universitas Negeri Padang, Padang, Indonesia

⁸Universitas Islam Negeri Sunan Ampel, Surabaya, Indonesia

⁹IPB University, Bogor, Indonesia

¹⁰Universitas Airlangga, Surabaya Indonesia

¹¹Village Tourism of Nagari Sijunjung, Sijunjung, Indonesia

¹²Geopark of Ranah Minang Silokek, Sijunjung, Indonesia

* e-mail: danilekafahrudin@gmail.com

Artikel submit	031525
Artikel review	MMDDYY
Artikel accepted	051725

Abstract

Nagari Sijunjung Indigenous Village, located in Sijunjung Regency, is a community with substantial agricultural potential. Rice is one of the primary commodities cultivated in this village. Currently, rice farming relies on a rain-fed system, which is highly dependent on the rainy season, resulting in synchronized planting schedules. This practice significantly increases the volume of rice straw waste after the harvest season, while its utilization remains suboptimal. One viable solution to address this issue is processing rice straw into compost. The aim of this program was to enhance the knowledge and skills of local residents in composting rice straw. The socialization activity was attended by 14 participants from Nagari Sijunjung Indigenous Village. Pretests and posttests were employed as evaluation tools to measure changes in participants' knowledge before and after the socialization sessions. The results indicated an improvement in the participants' understanding, as reflected by an increase in the average pretest score from 85.71 to a posttest average score of 87.14. However, among the variables assessed in the pretest and posttest, two variables exhibited a decline in average scores, suggesting that participants' understanding of these specific aspects requires further attention and improvement.

Keywords: Compost; Rice Straw; Community Service; Cow Dung; Sijunjung.

Abstrak

Kampung Adat Nagari Sijunjung, salah satu desa di Kabupaten Sijunjung, memiliki potensi pertanian yang signifikan. Tanaman padi merupakan salah satu komoditas utama yang dibudidayakan di desa ini. Hingga saat ini, budidaya padi masih menggunakan sistem tadah

hujan yang bergantung pada musim penghujan, sehingga proses penanaman dilakukan secara serentak. Kondisi ini menyebabkan peningkatan signifikan dalam jumlah limbah jerami setelah masa panen, sementara pemanfaatannya masih belum optimal. Salah satu solusi yang dapat diterapkan adalah mengolah jerami menjadi kompos. Program ini bertujuan untuk meningkatkan pengetahuan dan keterampilan masyarakat setempat dalam pengolahan jerami menjadi kompos. Kegiatan sosialisasi diikuti oleh 14 peserta yang berasal dari Kampung Adat Nagari Sijunjung. Pretest dan posttest digunakan sebagai alat evaluasi untuk mengukur perubahan pengetahuan peserta sebelum dan sesudah sosialisasi. Hasil penelitian menunjukkan adanya peningkatan rata-rata skor pretest dari 85,71 menjadi 87,14 pada posttest, yang mencerminkan peningkatan pengetahuan peserta. Namun, dari variabel yang diukur pada pretest dan posttest, terdapat dua variabel yang menunjukkan penurunan rata-rata skor, mengindikasikan bahwa pemahaman peserta terkait dua aspek tersebut masih perlu ditingkatkan.

Kata kunci: Kompos; Jerami; Pengabdian Masyarakat; Kotoran Sapi; Sijunjung.

INTRODUCTION

Nagari Sijunjung Indigenous Village, located in Sijunjung District, West Sumatra, is part of the Ranah Minang Silokek National Geopark, renowned for its breathtaking natural landscapes and distinctive cultural heritage. One of its key attractions is the "Lorong Waktu Minangkabau", a National Cultural Heritage site comprising 76 traditional houses dating back to the 16th and 17th centuries, with 40 of these homes functioning as homestays for tourists. In 2019, Nagari Sijunjung achieved 2nd place in the Anugerah Pesona Wisata Indonesia (Indonesian Tourism Charm Awards) in the Traditional Villages category and was recognized among the Top 500 ADWI (Indonesian Tourism Villages) in 2022. The development of agribusiness areas has become a key economic sector for the community, supported by the village's hilly topography and traversed by river streams (Syofiani, Putri and Karjunita, 2020). However, Sijunjung Regency faces significant environmental challenges, including illegal logging, mining, and palm oil plantations, which contribute to environmental degradation. These activities have led to the depletion of clean water resources and a decline in water availability for agricultural purposes (Eryani, 2020). Consequently, adopting sustainable agricultural practices is imperative to support environmental conservation and mitigate further ecological damage.

Transforming rice straw waste into compost is a viable solution. Compost is an organic product derived from the aerobic decomposition of organic waste with the help of decomposing microorganisms (Gondek *et al.*, 2020). Composting is considered one of the safest methods for managing organic waste, as it yields an organic fertilizer that can be applied to crops (Yaser *et al.*, 2022). Furthermore, composting enhances the value of organic waste by producing a nutrient-rich product that improves the physical, biological, and chemical properties of soil (Manea *et al.*, 2024). Additionally, composting reduces the viability of pathogens in organic waste due to the mesophilic and thermophilic temperature phases during microbial decomposition (Lepesteur, 2022).

Composting rice straw can produce nutrient-rich organic fertilizer for soil and plants. Rice straw consist of 17–22% lignin, 40–45% cellulose, and 60–80% holocellulose, which serve as carbon sources and substrates for decomposing microorganisms during the composting process (Rodríguez *et al.*, 2008). The compost made from rice straw contains 37.63% total organic carbon (TOC) and 64.87% organic matter (Qian *et al.*, 2014). These findings demonstrate that converting rice straw waste into compost is an effective strategy for managing this type of waste

in Kampung Nagari Adat Sijunjung. The composting initiative is expected to provide a sustainable alternative for the local community in managing corn cob waste. Furthermore, this effort serves as an educational opportunity to promote organic farming and sustainable agriculture practices, aligning with the Sustainable Development Goals (SDGs), particularly Goal 15: Life on Land.

This study has a strong relevance to sustainable environmental management as it aligns with the Sustainable Development Goals (SDGs), particularly SDG 12 and SDG 13. SDG 12 emphasizes responsible consumption and production, which can be achieved by managing rice straw waste through composting, thereby reducing environmentally harmful burning practices. This research explains the improvement of quality of life while minimizing the use of natural resources, hazardous materials, and waste throughout their life cycle to safeguard future needs (Capah, Rachim and Raharjo, 2023). Additionally, the initiative supports SDG 13, which focuses on climate action, as converting rice straw into compost helps lower carbon emissions and promotes environmentally friendly agricultural practices. By introducing simple and locally applicable technologies, this study not only fosters ecological sustainability but also raises community awareness of their role in environmental conservation (Idrus and Nur, 2024).

GENERAL DESCRIPTION OF THE COMMUNITY, PROBLEMS AND TARGET SOLUTIONS

General description

Sijunjung, as an agrarian region, produces significant amounts of organic waste, particularly from rice farming activities. The abundance of rice straw in Sijunjung presents both a challenge for waste management and an opportunity for sustainable agricultural practices. Utilizing agricultural by-products like rice straw can contribute to the local economy while promoting environmentally friendly solutions in the region. By integrating sustainable waste management with economic activities, Sijunjung has the potential to establish a model of green entrepreneurship in rural areas. Eco-friendly practices such as compost production can generate additional income streams for local communities. A major issue concerning rice straw waste in Kampung Nagari Adat Sijunjung is the lack of appropriate management to utilize this byproduct effectively. Currently, rice straw is directly discarded into rivers, causing new environmental problems as they pollute water sources used by the local community for daily needs. This underscores the urgent need for proper management of corn cob waste to address this issue.

Agri Socioeconomics of Respondents

Agri Socioeconomics of Respondents refers to the socio-economic attributes of individuals or households engaged in agricultural activities. This includes aspects such as income from farming, land ownership, educational background, type of crops and involvement in agricultural or community programs. Analyzing these factors provides insights into how socio-economic conditions shape farming practices, decision-making processes, and the willingness to adopt sustainable innovations, such as compost production (Indrawati *et al.*, 2020).

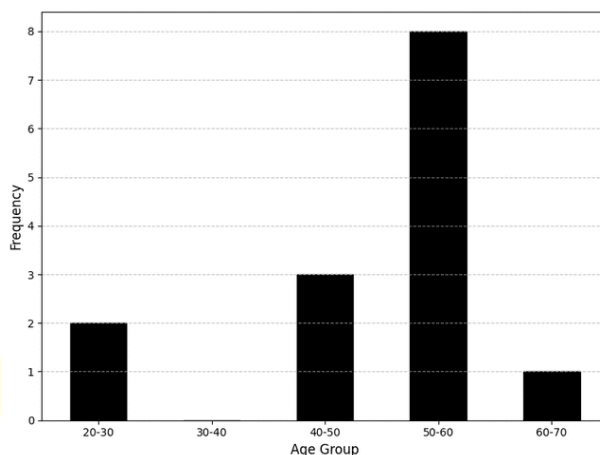


Figure 1: Ages Range of Respondents

Figure 5 illustrates that 12 respondents are in the senior ages from 40 years old and above. The age of farmers plays a crucial role in determining the sustainability of the agricultural sector, as older farmers face greater challenges in maintaining a productive workforce on their farms. Additionally, older farmers are often less receptive to new innovations and technologies that could enhance agricultural productivity. Therefore, it is essential to engage younger generations in agriculture to ensure more efficient and sustainable food production in the future (Sartika, Amnilis and Mahmud, 2020).

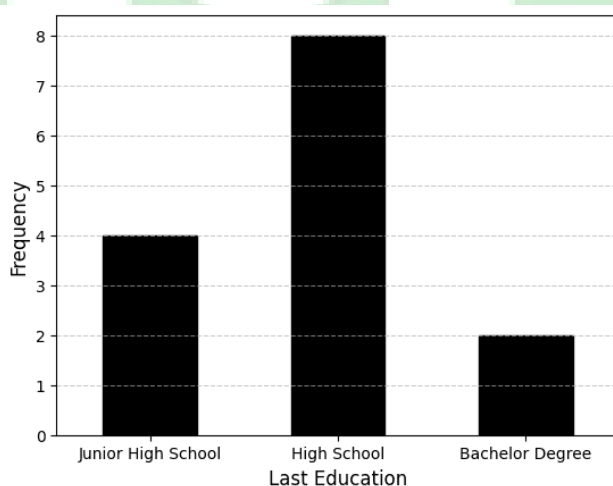


Figure 2: Last Education of Respondents

Figure 6 illustrates that only 2 of respondents have a bachelor's degree, and 12 of respondents have a senior high school below. The level of education significantly influences an individual's ability to adopt and apply advanced practices in various sectors, including agriculture, industry, and services. In the agricultural sector, the education level of farmers plays a crucial role in their capacity to adopt innovative techniques, utilize modern technologies, and implement sustainable farming practices effectively. Consequently, improving the educational attainment of farmers is a vital strategy for enhancing agricultural productivity and driving broader socio-economic progress (Gusti, Gayatri and Prasetyo, 2022).

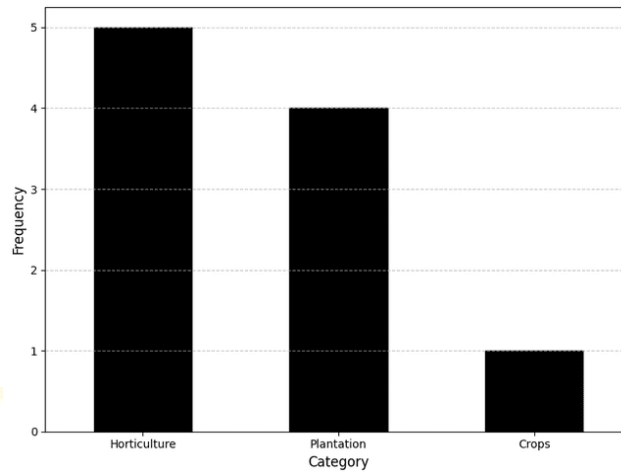


Figure 3: Respondents Commodities

Figure 7 explains that 5 out of 10 respondents have land planted with horticulture categories. The plants with horticulture categories include fruits and vegetables such as rambutan, durian, chili, eggplant etc. Meanwhile, 4 respondents have land with plantation category, and the rest have land planted with crops categories. And the plants with plantation categories are such as palm oil, rubber and coffee, while crops categories are such as rice. As illustrated in Figure 7, food crops are the least cultivated type of crop in Nagari Sijunjung Indigenous Village. This is primarily because, at the time of the activity, the rice crop had already been harvested, and most of the farmland was being utilized for the cultivation of horticultural commodities.

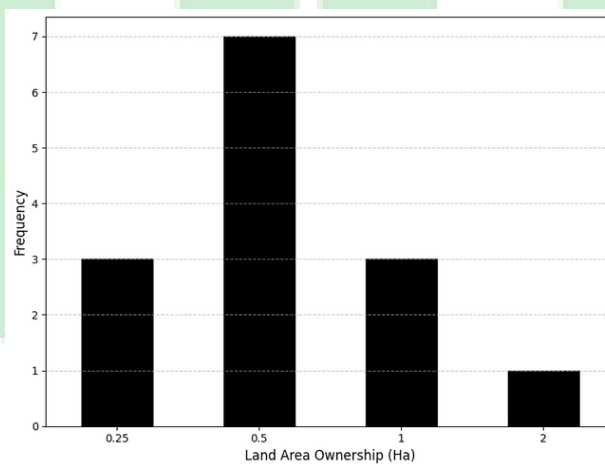


Figure 4: Land Area Ownership of Respondents

From 10 respondents cultivate crops on plots sized between 0.6-1.0 hectares. This range supports both subsistence and small-scale commercial farming for staple crops such as rice and corn. Another 3 of respondents farm on smaller plots of 0.1-0.5 hectares, typically for household consumption. Only 1 of the farmers manage plots larger than 2.0 hectares, which are primarily used for large-scale crop production. The size of agricultural land in a region reflects the available agrarian potential to support food security and provides an overview of the production capacity that can be optimized through sustainable management (Andrias, Darusman and Ramdan, 2018).

Problem

The community faces significant challenges in managing its abundant rice straw waste. The lack of proper waste management systems has led to inefficient utilization of this agricultural byproduct, resulting in environmental issues. Many farmers discard rice straw directly into rivers, causing water pollution and threatening local water sources. This improper disposal not only harms the environment but also represents a missed economic opportunity.

Target solution

Transforming rice straw waste into compost presents a sustainable and effective solution for waste management in Kampung Nagari Adat Sijunjung. Composting not only reduces environmental pollution but also enhances soil fertility, promoting sustainable agricultural practices. By adopting this approach, we conducted a compost making socialization to farmers with the framework on Figure 5 and the mechanism on Figure 6.

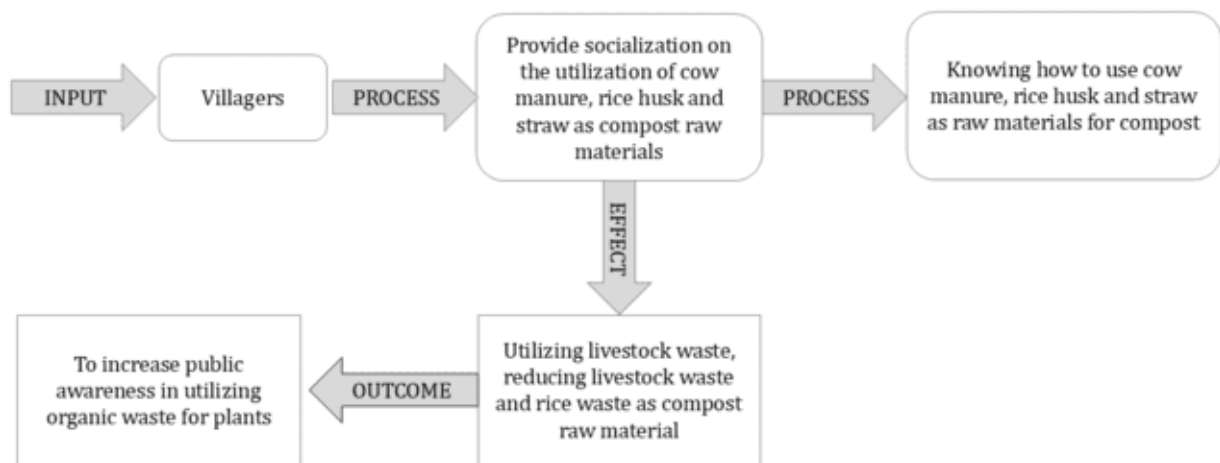


Figure 5: Problem-solving Framework

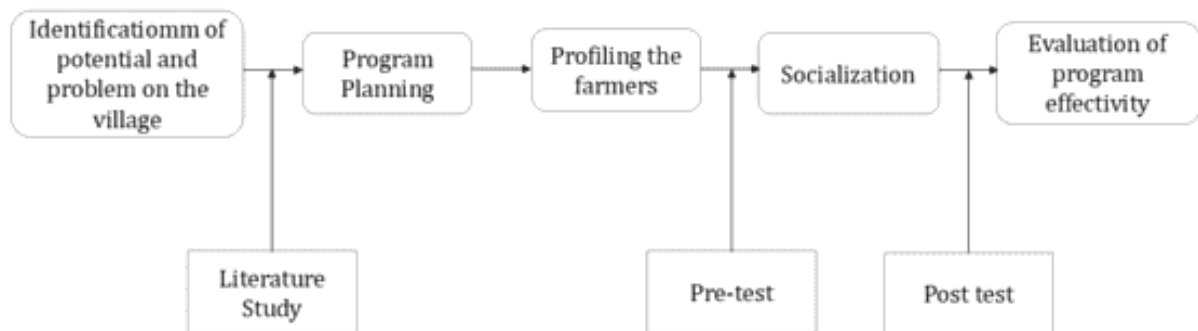


Figure 6: Mechanism of Program Implementation

METHOD

The method used in this community service program began with identifying problems and potentials related to agriculture and the environment in the target area. The identification of agricultural and environmental issues and potentials in the Nagari Sijunjung Traditional Village was conducted through interviews with local residents and farmers. Once the problems were identified, a literature review and discussions with the community and farmers were carried out to determine appropriate solutions to address the identified issues. Discussions were also conducted to assess the level of knowledge among the community and farmers regarding the proposed solutions and work programs to be implemented. After defining the work programs,

activity planning was undertaken to prepare for the socialization activities in the target area. Details of the activities are presented in Table 1.

Table 1 : Methods of Program

No	Methods	Activity
1	Identification of potential and problem on the village	Survey the potential and the problem of the agricultural and environmental sector of the Nagari Sijunjung Indigenous Village through interview and discussion with the farmers
2	Literature study	Looking for some information through credible articles that have some case with the problem on the village
3	Program planning	Construct the program planning based on the potential and problem on the village and the literature study
4	Profiling the respondents	Collect the data about the respondents such as the age, last education, land area ownership, and cultivated commodity of the farmers,
5	Program Implementation	Program implementation conducted by demonstration of making the compost from rice straw waste to the farmers
6	Evaluation of program effectivity	Measured the effectiveness of the program based on knowledge of the farmers before and after the socialization. Pre-tests and post-tests were used to measure the increase in farmers' knowledge.

Compost making

The composting process began with the preparation of materials. The materials used in this program included corn cob waste, corn stalk waste, cow manure, husk charcoal, rice bran, molasses, and EM4. Corn cob and corn stalk waste were chopped beforehand to accelerate and simplify the decomposition process. Meanwhile, EM4 and molasses were mixed and dissolved in water. Afterward, the chopped corn cob and corn stalk waste were combined with cow manure, husk charcoal, and rice bran until evenly mixed. The solid materials were then thoroughly blended with the liquid mixture of EM4 and molasses. The compost mixture was placed in plastic trash bags and tightly sealed. The tight sealing ensured that the compost mixture remained in anaerobic conditions. The compost was stirred every three days to ensure uniform composting and to maintain an even temperature throughout the mixture. The flowchart of the composting process is shown in Figure 7.

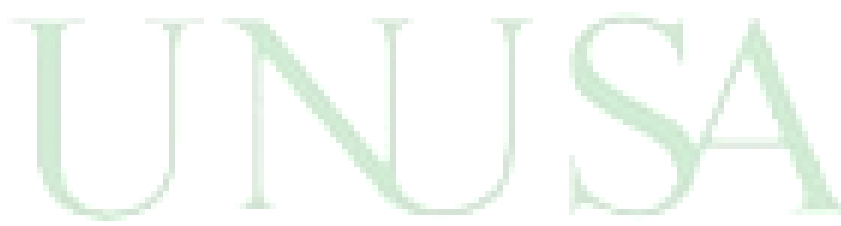




Figure 7 : Flowchart of The Composting Process

Evaluation of program effectiveness

The effectiveness of the program was evaluated using pre- and post-tests to measure farmers' knowledge before and after the socialization. Ten variables were used to assess farmers' understanding of compost making from corncob waste and its environmental impact. The variables included the definition of compost, the definition of EM4, the composition of compost, criteria for manure, the compost-making process, the fermentation process in compost making, compost application, the benefits of compost, the impact of using chemical fertilizers, and the environmental impact of waste disposal. After the pre-test and post-test results were obtained, the increased score from pre test and post test was measured.

RESULTS AND DISCUSSION

This program was conducted on January 1, 2024, at the Nagari Sijunjung Indigenous Village Hall. The activity was attended by 14 residents as participants. Nagari Sijunjung Indigenous

Village is a community with significant agricultural potential. Key crops cultivated by the local population include food crops, horticultural plants, and plantation crops. Rice is the primary crop cultivated in this village. Currently, rice farming relies on a rain-fed system, making it heavily dependent on the rainy season. As a result, rice cultivation is typically carried out only twice a year. Rice straw is a major by-product generated from rice cultivation. However, its utilization in Nagari Sijunjung Indigenous Village remains suboptimal. Generally, straw is either left to decompose in the fields or burned. To address this issue, processing straw into compost offers a viable solution.

The socialization phase began with the identification of potential and problems in the village. During this stage, a survey was conducted to assess the potentials and challenges at the service location. This survey also facilitated the preparation of work programs to ensure their relevance to the village's current conditions (Rohimah and Kurnia, 2021). Based on the survey findings, the work program to be implemented was tailored to address the identified issues and capitalize on local potentials. The next step involved a literature review to explore and understand the concepts, theories, and working principles of the planned program. This stage utilized references from relevant research articles and community service reports (Bernik *et al.*, 2015).

Program planning was conducted once all necessary information regarding potential work programs had been gathered. The information included the program's alignment with the service location and its operational methods and principles. Planning began with engaging local community representatives, presenting the details of the program, and preparing technical arrangements for the implementation day. The program execution comprised respondent profiling followed by the socialization of compost-making techniques. Respondent profiling was conducted to gain insights into participants' behavior and basic understanding of agricultural practices (Combarry and Atchrimi, 2024). Key profiling data included demographic and socio-economic variables such as age, cultivated commodities, land size, and respondents' education levels.

Socialization was carried out after respondent profiling. This process aimed to enhance participants' awareness, knowledge, and skills related to compost-making (Jaya *et al.*, 2024). Before and after the socialization session, participants completed pretests and posttests. These tools were designed to measure respondents' understanding both before and after the program. Additionally, pretests and posttests served as evaluative instruments to assess the program's effectiveness (Suweta, Yatim and Sataral, 2021).



Figure 8 : Program Documentation

PROGRAM EFFECTIVENESS

Tabel 2. Variable of Questionnaire

No	Variable	Score Average		Score Increase
		Pre Test	Post Test	
1	Definition of compost	8.57	8.57	0.00
2	Definition of EM4	7.86	8.57	0.71
3	Composition of compost	10.00	10.00	0.00
4	Criteria for manure	5.71	7.14	1.43
5	Compost-making process	10.00	10.00	0.00
6	Fermentation process in compost making	9.29	10.00	0.71
7	Compost application	10.00	10.00	0.00
8	Benefits of compost	10.00	10.00	0.00
9	Impact of using chemical fertilizers	9.29	8.57	-0.71
10	Environmental impact of waste disposal	5.00	4.29	-0.71

Based on the analysis of ten measured variables (questions posed in the tests), three variables exhibited an increase in scores, five remained unchanged between the two tests, and two showed a decrease in scores. Additionally, the variables related to compost composition, compost-making processes, compost application, and benefits of compost consistently achieved full scores across both tests. However, the variables concerning the impact of using chemical fertilizers and the environmental impact of waste disposal demonstrated a negative change in scores. This outcome could be attributed to the insufficiently effective explanations provided by the facilitators to the respondents.

CONCLUSIONS AND SUGGESTIONS

The compost-making socialization activity conducted in Nagari Sijunjung Indigenous Village was successfully implemented, with 14 participants from the village actively involved. Based on the study results, there was an improvement in the respondents' knowledge about compost, as evidenced by an increase in the average pretest score from 85.71 to a posttest average score of 87.14. However, two variables demonstrated a decline in their posttest average scores, indicating that the delivery of information on these topics was not yet fully effective.

ACKNOWLEDGEMENT

The authors extend our deepest gratitude to the local government of Nagari Sijunjung, particularly to Mr. Rajilis (Wali Nagari Sijunjung) and Mrs. Yusnidar Wahab (Chairperson of Bundo Kanduang 2018–2023), for their invaluable support and for granting us the opportunity to conduct this study on compost making from rice straw. Their encouragement and facilitation have been instrumental in the successful implementation of this initiative.

Our sincere appreciation also goes to Yayasan Barakarsa and the dedicated volunteers of Ekspedisi Budaya Nusantara 2, whose commitment and assistance greatly contributed to the execution of this project. Their moral and material support have been vital throughout the research and writing process.

REFERENCE

- Andrias, A.A., Darusman, Y. and Ramdan, M. (2018) 'Pengaruh Luas Lahan Terhadap Produksi Dan Pendapatan Usahatani Padi Sawah (Suatu Kasus Di Desa Jelat Kecamatan Baregbeg Kabupaten Ciamis)', *Jurnal Ilmiah Mahasiswa AGROINFO GALUH*, 4(1), pp. 522–529. Available at: <https://doi.org/10.25157/jimag.v4i1.1591>.
- Bernik, M. *et al.* (2015) 'Managing Innovation of SMEs in Creative Industry for Interactive Game Subsector and TV and Radio Subsector Based on Local Wisdom in Development of Competitiveness Business (Case Study SMESs in Bandung)', *International Journal of Business and Administrative Studies*, 1(2). Available at: <https://doi.org/10.20469/ijbas.10001-2>.
- Capah, B.M., Rachim, H.A. and Raharjo, S.T. (2023) 'Implementasi SDG's-12 Melalui Pengembangan Komunitas Dalam Program Csr', *Share: Social Work Journal*, 13(1), p. 150. Available at: <https://doi.org/10.24198/share.v13i1.46502>.
- Combarry, Y.E.F. and Atchrimi, B.T. (2024) 'Residents' perceptions of urban nature and nature-based solutions in Ouagadougou', *Frontiers in Sustainable Cities*, 6. Available at: <https://doi.org/10.3389/frsc.2024.1487272>.
- Eryani, N.D. (2020) 'Kebijakan Pemerintahan Daerah Dalam Pengelolaan Kerusakan Lingkungan Hidup Di Kabupaten Sijunjung Dan Kabupaten Dharmasraya', *Jurnal Demokrasi dan Politik Lokal*, 2(1), pp. 1–15. Available at: <https://doi.org/10.25077/jdpl.2.1.1-15.2020>.
- Gondek, M. *et al.* (2020) 'Soluble Salts in Compost and Their Effects on Soil and Plants: A Review', *Compost Science & Utilization*, 28, pp. 59–75. Available at: <https://doi.org/10.1080/1065657X.2020.1772906>.
- Gusti, I.M., Gayatri, S. and Prasetyo, A.S. (2022) 'The Affecting of Farmer Ages, Level of Education and Farm Experience of the farming knowledge about Kartu Tani beneficial and method of use in Parakan Distric, Temanggung Regency', *Jurnal Litbang Provinsi Jawa Tengah*, 19(2), pp. 209–221. Available at: <https://doi.org/10.36762/jurnaljateng.v19i2.926>.
- Idrus, Muh.R.H. and Nur, U.A. (2024) 'Realisasi Penanganan Perubahan Iklim Di Indonesia Melalui Implementasi Sustainable Development Goals (SDGs): Tujuan-13.1.3', *Indonesian Journal of International Relations*, 8(1), pp. 77–100. Available at: <https://doi.org/10.32787/ijir.v8i1.509>.
- Indrawati, E. *et al.* (2020) 'Integrated Agriculture-Based Agrotourism Model with Eco-Friendly Environmentalism on Carik Injeman Land In Cibodas Village', *Journal of Environmental Science and Sustainable Development*, 3(1), pp. 177–194. Available at: <https://doi.org/10.7454/jessd.v3i1.1031>.
- Lepesteur, M. (2022) 'Human and livestock pathogens and their control during composting', *Critical Reviews in Environmental Science and Technology*, 52(10), pp. 1639–1683. Available at: <https://doi.org/10.1080/10643389.2020.1862550>.
- Manea, E.E. *et al.* (2024) 'Composting as a Sustainable Solution for Organic Solid Waste Management: Current Practices and Potential Improvements', *Sustainability*, 16(15), p. 6329. Available at: <https://doi.org/10.3390/su16156329>.

- Qian, X. *et al.* (2014) 'Co-composting of livestock manure with rice straw: Characterization and establishment of maturity evaluation system', *Waste Management*, 34(2), pp. 530–535. Available at: <https://doi.org/10.1016/j.wasman.2013.10.007>.
- Rodríguez, A. *et al.* (2008) 'Rice straw pulp obtained by using various methods', *Bioresource Technology*, 99(8), pp. 2881–2886. Available at: <https://doi.org/10.1016/j.biortech.2007.06.003>.
- Rohimah, S. and Kurnia, T. (2021) 'Peningkatan Ekonomi Masyarakat Melalui Inovasi Produk Olahan Keripik Kulit Singkong | ALMUJTAMAE: Jurnal Pengabdian Masyarakat'. Available at: <https://ojs.unida.ac.id/almujtamae/article/view/2914> (Accessed: 8 March 2025).
- Sartika, M., Amnilis and Mahmud (2020) 'Analisis Kelayakan Usahatani Padi Sawah (Oriza Sativa L.) Di Nagari Kinali, Kecamatan Kinali, Kabupaten Pasaman Barat', 4(2).
- Suweta, I.K., Yatim, H. and Sataral, M. (2021) 'Growth and yield of rice fields with posbidik compost and jajar legowo planting system', *CELEBES Agricultural*, 2(1), pp. 1–9. Available at: <https://doi.org/10.52045/jca.v2i1.177>.
- Syofiani, R., Putri, S.D. and Karjunita, N. (2020) 'Karakteristik Sifat Tanah Sebagai Faktor Penentu Potensi Pertanian Di Nagari Silokek Kawasan Geopark Nasional', *Jurnal Agrium*, 17(1). Available at: <https://doi.org/10.29103/agrium.v17i1.2349>.
- Yaser, A.Z. *et al.* (2022) 'Composting and Anaerobic Digestion of Food Waste and Sewage Sludge for Campus Sustainability: A Review', *International Journal of Chemical Engineering*, 2022(1), p. 6455889. Available at: <https://doi.org/10.1155/2022/6455889>.

The logo for UNUSA (Universitas Negeri Sumatera Utara) is centered on the page. It features a large, stylized green letter 'U' with a white outline. Below the 'U' is the word 'UNUSA' in a green, serif font. The logo is flanked by two yellow stars.